

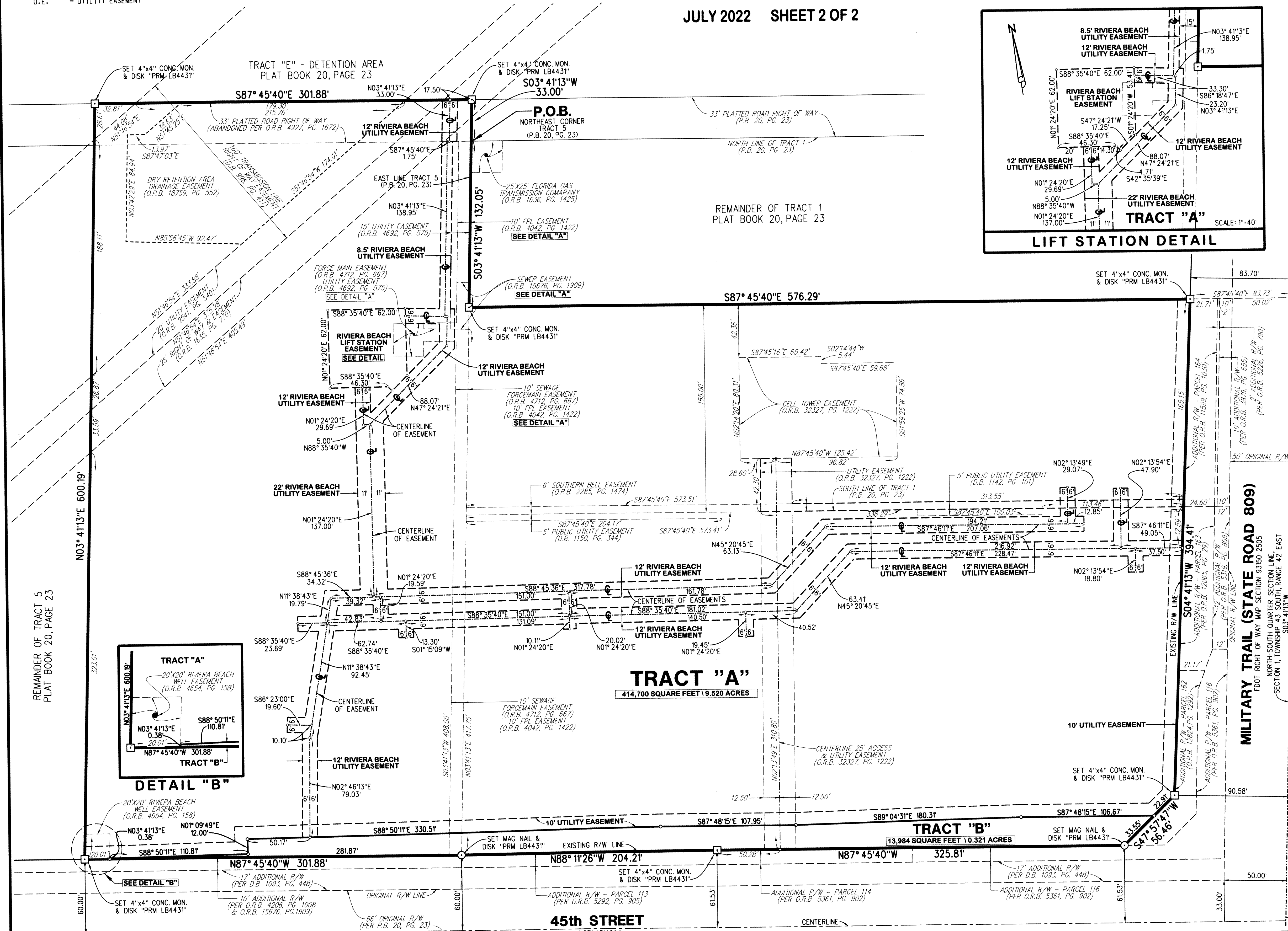
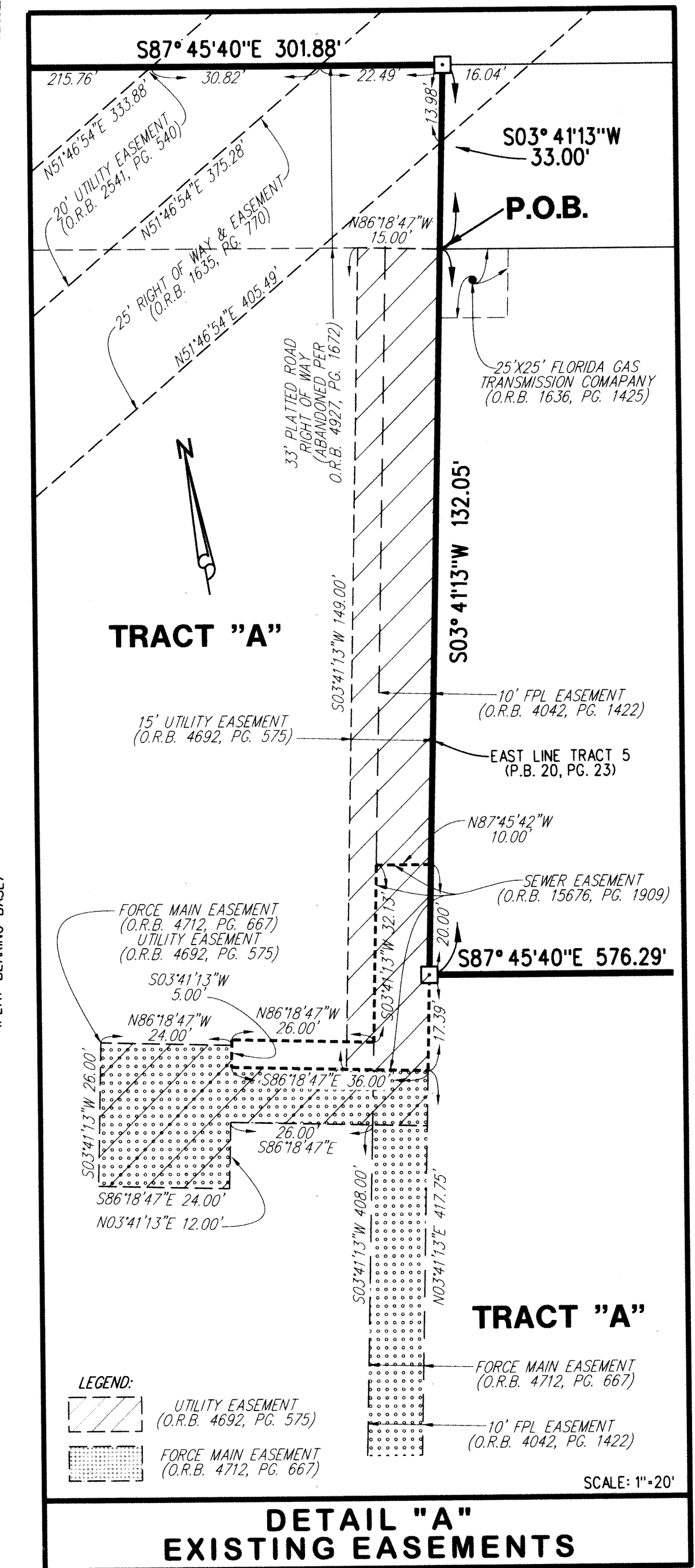
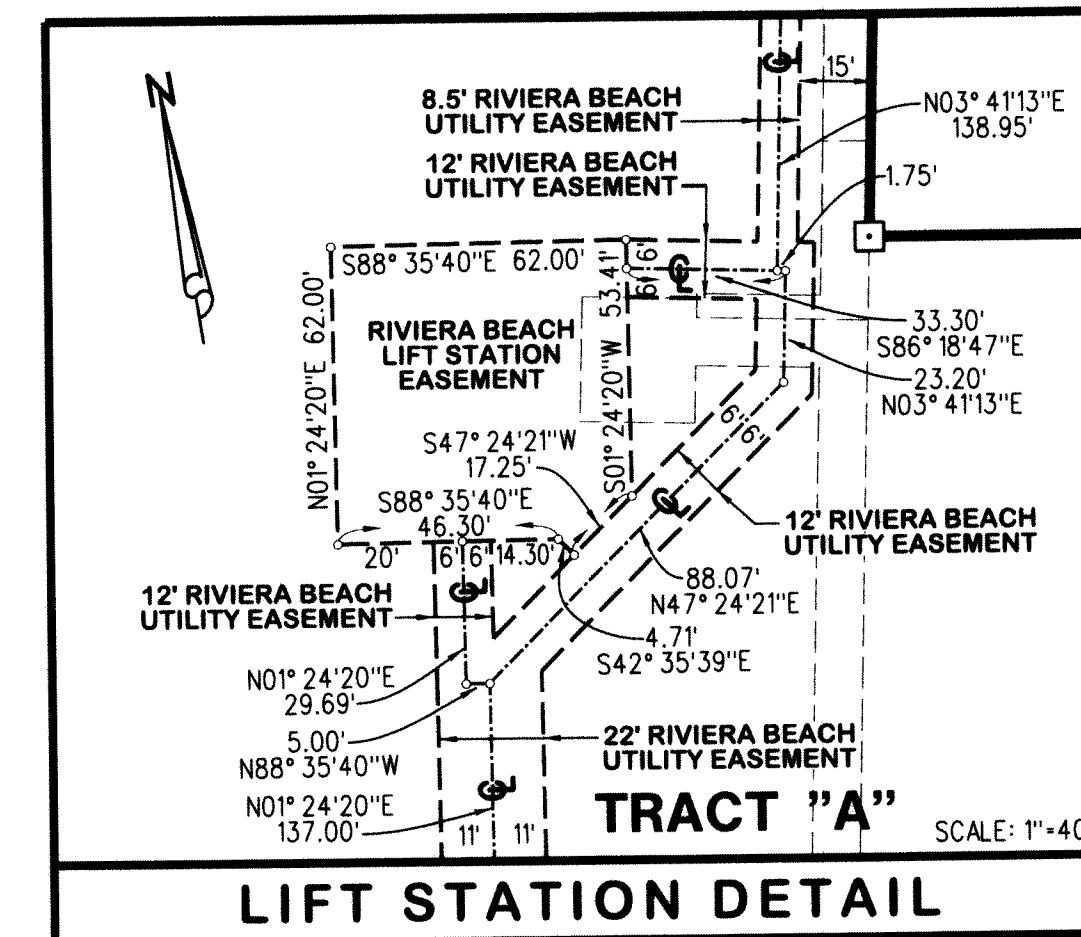
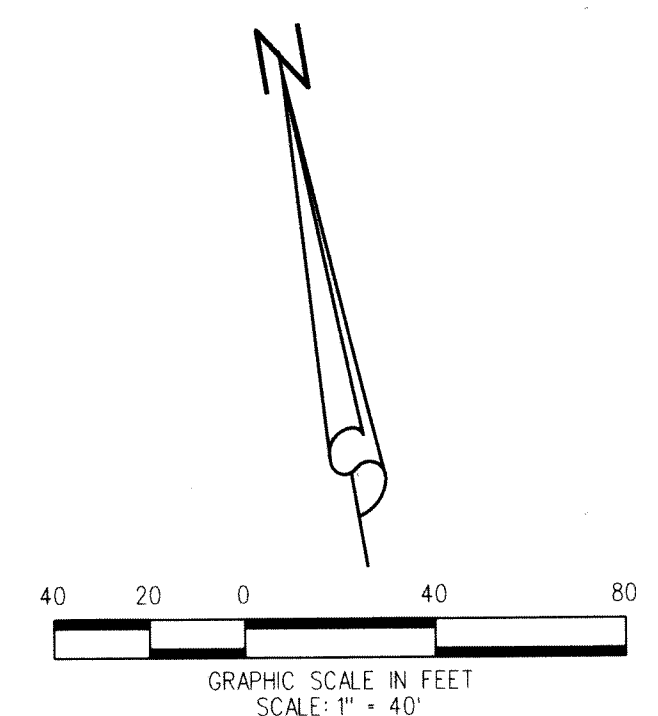
PRIME CORNER

A PARCEL OF LAND BEING A REPLAT OF PORTIONS OF TRACTS 1, 2 AND 5, ACCORDING TO THE PLAT OF ADAMS SUBDIVISION, RECORDED IN PLAT BOOK 20, PAGE 23, LYING IN SECTION 1, TOWNSHIP 43 SOUTH RANGE 42 EAST, CITY OF WEST PALM BEACH, PALM BEACH COUNTY, FLORIDA

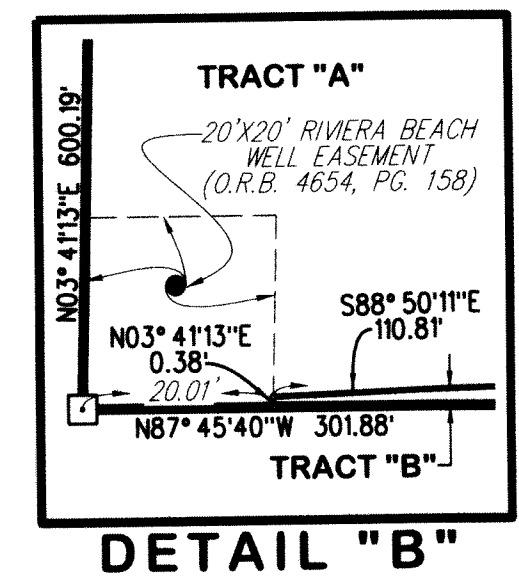
JULY 2022 SHEET 2 OF 2

ABBREVIATIONS:

- C = CENTERLINE
- FDOT = FLORIDA DEPARTMENT OF TRANSPORTATION
- FPL = FLORIDA POWER & LIGHT CO.
- O.R.B. = OFFICIAL RECORD BOOK
- P.B. = PLAT BOOK
- P.O.B. = POINT OF BEGINNING
- P.S.M. = PROFESSIONAL SURVEYOR AND MAPPER
- PG. = PAGE
- PRM = PERMANENT REFERENCE MONUMENT
- R/W = RIGHT OF WAY
- U.E. = UTILITY EASEMENT



REMAINDER OF TRACT 5
PLAT BOOK 20, PAGE 23



LEGEND

- DENOTES PERMANENT REFERENCE MONUMENT (P.R.M.) SET 4"x4" CONCRETE MONUMENT WITH DISK STAMPED "PRM LB4431" UNLESS OTHERWISE NOTED
- DENOTES PERMANENT REFERENCE MONUMENT (P.R.M.) SET MAG NAIL & DISK STAMPED "PRM LB4431" UNLESS OTHERWISE NOTED

LIDBERG LAND SURVEYING, INC.
 675 West Indiantown Road, Suite 200
 Jupiter, Florida 33458 TEL. 561-746-8454

CAD.	K:UST \ 014342 \ 18-063-306 \ 18-063-306.DGN
REF.	
F.L.D.	PG.
OFF.	L.J.C.
CKD.	D.C.L.
JOB	18-063-306
DATE	JULY 2022
DWG.	018-063P
SHEET	2 OF 2